

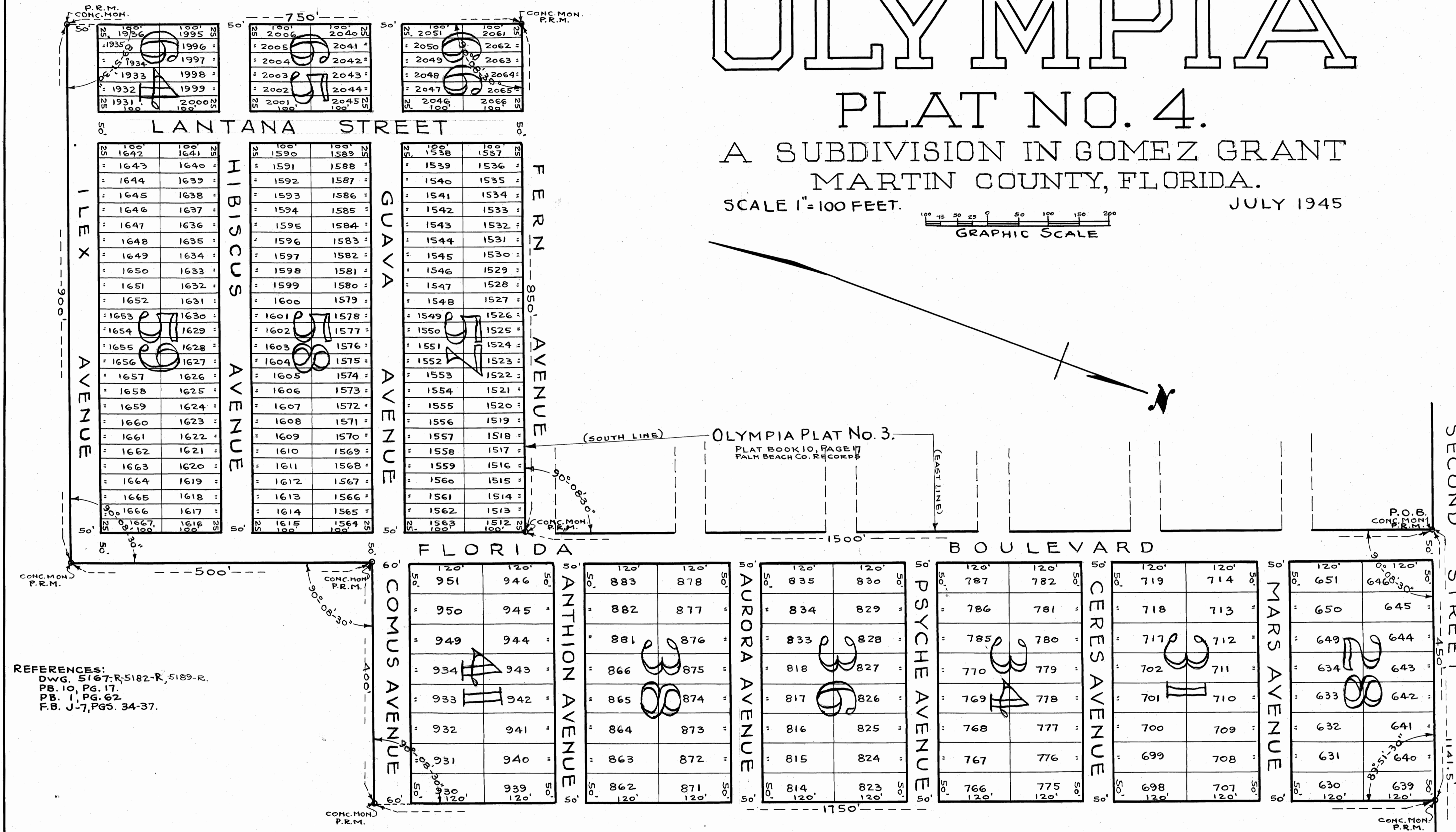
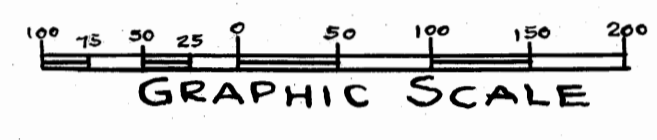
# OLYMPIA

## PLAT NO. 4.

A SUBDIVISION IN GOMEZ GRANT  
MARTIN COUNTY, FLORIDA.

SCALE 1"=100 FEET.

JULY 1945



REFERENCES:  
DWG. 5167-R, 5182-R, 5189-R.  
PB. 10, PG. 17.  
PB. 1, PG. 62.  
F.B. J-7, PGS. 34-37.

### SURVEYORS CERTIFICATE

I HEREBY CERTIFY THAT THIS PLAT IS A TRUE AND CORRECT REPRESENTATION OF THE LAND PLATTED AND THAT PERMANENT REFERENCE MONUMENTS HAVE BEEN PLACED ON CERTAIN LAND AS REQUIRED BY LAW.

*John J. Carr*  
CIVIL ENGINEER & LAND SURVEYOR  
FLA. STATE CERT'S. NO. 173 & 140.



SUBSCRIBED AND SWORN TO BEFORE ME

THIS 11th DAY OF Sept. 1945.

*Arthur L. Wilbur*  
NOTARY PUBLIC.

MY COMMISSION EXPIRES 2-9-1947

Notary Public, State of Florida at large.  
My Commission expires February 9, 1947.



APPROVED FOR RECORD 9-21-1945.  
FOR THE BOARD OF COUNTY COMMISSIONERS  
OF MARTIN COUNTY, FLORIDA.

BY: *Arthur L. Wilbur*

### DEDICATION

STATE OF FLORIDA, ss  
COUNTY OF MARTIN

KNOW ALL MEN BY THESE PRESENTS: THAT THE HOBE SOUND COMPANY, A CORPORATION EXISTING UNDER THE LAWS OF THE STATE OF DELAWARE, HAVING ITS PRINCIPLE PLACE OF BUSINESS IN THE COUNTY OF MARTIN AND STATE OF FLORIDA, THE OWNERS OF THE TRACT OF LAND SHOWN HEREON AND MORE PARTICULARLY DESCRIBED AS FOLLOWS: START AT THE NORTHWEST CORNER OF LOT 86 OF THE SUBDIVISION OF "GOMEZ" AS RECORDED IN PLAT BOOK 1, PAGE 62, PUBLIC RECORDS OF PALM BEACH COUNTY, FLORIDA; THENCE RUN WESTERLY ALONG THE PROLONGATION OF THE SOUTH LINE OF SECOND STREET (NOW BRIDGE ROAD) AS SHOWN ON THE SAID PLAT OF "GOMEZ", A DISTANCE OF 1141.5 FEET TO THE SOUTHWEST CORNER OF SAID BRIDGE ROAD AND FLORIDA BOULEVARD, TO A CONCRETE MONUMENT WHICH IS THE NORTHEAST CORNER OF OLYMPIA, PLAT NO. 3, AS RECORDED IN PLAT BOOK 10, PAGE 17, PUBLIC RECORDS OF PALM BEACH COUNTY, FLORIDA, FOR A POINT OF BEGINNING; THENCE RUN SOUTHERLY WITH AN ANGLE OF 90°-08'-30", TURNED FROM EAST TO SOUTH, AND PARALLEL TO LOTS 86, 85 AND 84 OF "GOMEZ", AFORESAID, A DISTANCE OF 1500 FEET TO A CONCRETE MONUMENT MARKING THE SOUTHEAST CORNER OF OLYMPIA, PLAT NO. 3; THENCE RUN WESTERLY ALONG THE SOUTH LINE OF OLYMPIA, PLAT NO. 3, WITH AN ANGLE OF 90°-08'-30", TURNED FROM NORTH TO WEST, A DISTANCE OF 850 FEET TO A CONCRETE MONUMENT IN THE SOUTH LINE OF FERN AVENUE; THENCE SOUTHERLY WITH AN ANGLE OF 90°-08'-30", TURNED FROM EAST TO SOUTH, A DISTANCE OF 750 FEET TO A CONCRETE MONUMENT IN THE SOUTH LINE OF ILEX AVENUE; THENCE EASTERLY ALONG THE SOUTH LINE OF ILEX AVENUE, WITH AN ANGLE OF 89°-51'-30", TURNED FROM NORTH TO EAST, A DISTANCE OF 900 FEET TO A CONCRETE MONUMENT, MARKING THE SOUTHEAST CORNER OF ILEX AVENUE AND FLORIDA BOULEVARD; THENCE NORTHERLY ALONG THE EAST LINE OF FLORIDA BOULEVARD, WITH AN ANGLE OF 90°-08'-30", TURNED FROM WEST TO NORTH, A DISTANCE OF 500 FEET, TO A CONCRETE MONUMENT MARKING THE SOUTHEAST CORNER OF GUAVA AVENUE AND FLORIDA BOULEVARD; THENCE RUN EASTERLY ALONG THE SOUTH LINE OF GUAVA AVENUE, WITH AN ANGLE OF 90°-08'-30", TURNED FROM SOUTH TO EAST, A DISTANCE OF 400 FEET TO A CONCRETE MONUMENT IN THE SOUTH LINE OF GUAVA AVENUE; THENCE RUN NORTHERLY WITH AN ANGLE OF 90°-08'-30", TURNED FROM WEST TO NORTH, A DISTANCE OF 1750 FEET TO A CONCRETE MONUMENT IN THE SOUTH LINE OF SECOND STREET (NOW BRIDGE ROAD); THENCE WESTERLY WITH AN ANGLE OF 89°-51'-30", TURNED FROM SOUTH TO WEST, A DISTANCE OF 450 FEET, TO THE POINT OF BEGINNING. HAVE CAUSED THE SAME TO BE SURVEYED AND PLATTED AS SHOWN HEREON AND DO HEREBY DEDICATE TO THE USE OF THE PUBLIC THE BOULEVARD, AVENUES, STREET AND ROAD AS SHOWN HEREON, RESERVING, HOWEVER, UNTO ITSELF, ITS SUCCESSORS OR ASSIGNS, THE REVERSION OR REVERSIONS OF THE SAME WHENEVER IT IS ABANDONED BY THE PUBLIC OR DISCONTINUED BY LAW.

IN WITNESS WHEREOF, IT HAS CAUSED THESE PRESENTS TO BE SIGNED BY ITS PRESIDENT AND ITS CORPORATE SEAL AFFIXED AND ATTESTED BY ITS SECRETARY THIS 11th DAY OF SEPTEMBER A.D. 1945.

ATTEST *P. P. Oughterson*  
SECRETARY.



SIGNED *Permelia P. Reed*  
PRESIDENT.

### ACKNOWLEDGEMENT

STATE OF FLORIDA, ss  
COUNTY OF MARTIN

BEFORE ME PERSONALLY APPEARED PERMELIA P. REED AND T.T. OUGHTERSON, TO ME WELL KNOWN AND KNOWN TO ME TO BE THE PRESIDENT AND SECRETARY, RESPECTIVELY, OF THE HOBE SOUND COMPANY, THE CORPORATION NAMED IN THE FOREGOING INSTRUMENT, AND KNOWN TO ME TO BE THE PERSONS WHO, AS SUCH OFFICERS OF SAID CORPORATION, EXECUTED THE SAME, AND THEN AND THERE THE SAID PERMELIA P. REED AND THE SAID T.T. OUGHTERSON DID ACKNOWLEDGE BEFORE ME THAT SAID INSTRUMENT IS THE FREE ACT AND DEED OF SAID CORPORATION BY THEM RESPECTIVELY EXECUTED AS SUCH OFFICERS FOR THE PURPOSE THEREIN EXPRESSED, THAT THE SEAL, THEREUNTO ATTACHED IS ITS CORPORATE SEAL, BY THEM IN LIKE CAPACITY, AFFIXED ALL UNDER AUTHORITY IN THEM DULY VESTED BY THE BOARD OF DIRECTORS OF SAID CORPORATION.

WITNESS MY HAND AND OFFICIAL SEAL,  
THIS 11th DAY OF Sept. 1945.

*Arthur L. Wilbur*  
NOTARY PUBLIC  
MY COMMISSION EXPIRES 2-9-1947

**GEO. W. CARR**  
REGISTERED CIVIL ENGR & LAND SURVEYOR  
FLORIDA CERTIFICATES 173 & 140.  
WEST PALM BEACH, FLORIDA.

